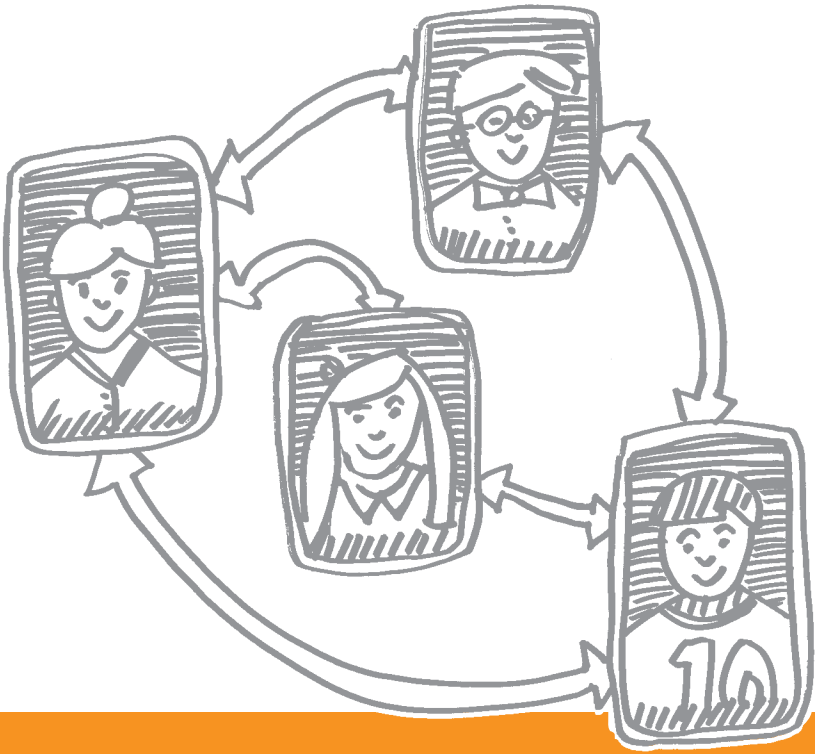


CONNECTIONS THAT START NOW AND LAST A LIFETIME



With a wide array of benefits designed to support you as a computer science, computer engineering, or software engineering student, an IEEE Computer Society student membership can take you from the classroom to the conference room.

IEEE Computer Society membership offers the lifelong, professional relationships a computer or software engineering career demands, as well as the immediate, everyday benefits that will help as you get your degree.

- ▶ Academic and professional research resources
- ▶ Free software, e-books, and videos
- ▶ Abundant networking opportunities
- ▶ Access to exclusive scholarship programs
- ▶ Intensive prep courses for industry certifications
- ▶ Career guidance and job search resources
- ▶ Access to our global programming competition
- ▶ And even an @computer.org email alias that follows you from job to job

The connections you make in college can last a lifetime. Make the most of them by joining the IEEE Computer Society today as a student member.

Learn more and apply for student membership at www.computer.org/membership.

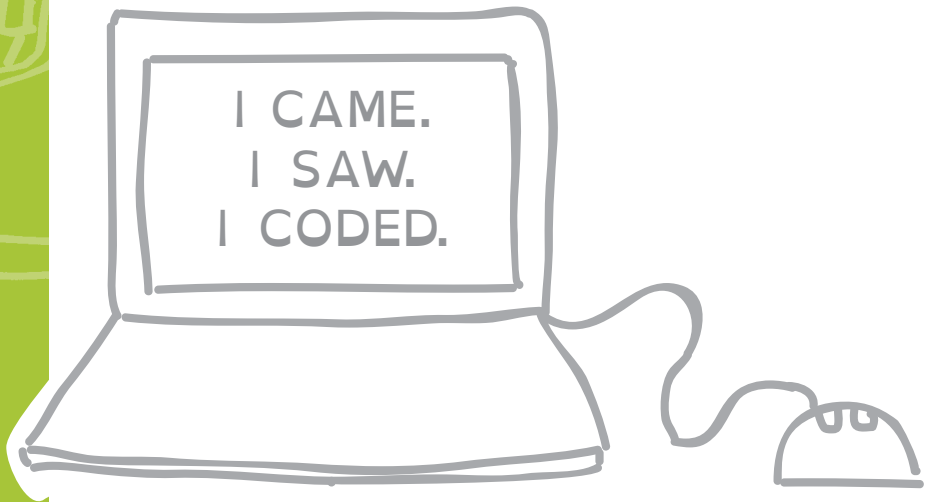
MEMBERSHIP MEANS CONNECTIONS AND SO MUCH MORE

Who We Are

IEEE Computer Society student membership means connections, and connections mean opportunities. Opportunities to learn, to grow, and to interact with your peers.

This is what professional societies have always done—provided like-minded individuals with an intellectual and physical space to get together, share ideas, and make partnerships.

In the world of computer and software engineering, the IEEE Computer Society has served the same function for more than 60 years, and continues to do so. Because even in the age of Twitter, Skype, and Google Chat, getting together face-to-face still counts.



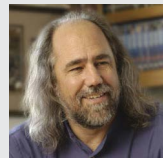
What We Offer

IEEE Computer Society membership offers tangible, everyday resources—many of them included with your membership—to help get you through your college years, such as:

- ▶ Full access to the prestigious IEEE Computer Society Digital Library—an online repository of information that includes copies of every IEEE Computer Society publication, as well as 3,800 conference publications and 550,000 documents covering every topic in the field of computing.
- ▶ Free development software from Microsoft, including Visual Studio Team System, Expression Design, Project 2010, and Visio 2010.
- ▶ 16 KnowledgeCenters packed with hundreds of online courses, practice certification exams, and videos covering Microsoft, Cisco, Oracle, IT Security, project management, and more.
- ▶ 650 titles and videos from Safari Books Online—certain to make your academic research easier than ever.
- ▶ Free Jobs Board access—the one-stop destination for tech professionals at any stage of their career, whether they’re getting started, advancing, or transitioning.
- ▶ Exclusive access to the Richard E. Merwin Scholarship Program, which awards \$40,000 a year to students who are active IEEE Computer Society members.
- ▶ Access to IEEEExtreme, IEEE’s global programming competition pitting up-and-coming programmers, like you, against one another.



“Access to the IEEE Computer Society Digital Library has proven to be an invaluable resource to my research and professional practice.”



Grady Booch, Chief Scientist for Software Engineering, IBM Research

“I’ve relied heavily on the IEEE Computer Society on many occasions—including finding relevant publications for my research, finding a summer internship, and connecting with professionals within my university and worldwide.”

Neel Shah, IEEE Computer Society Richard E. Merwin Scholar
Northeastern University

How Membership Works

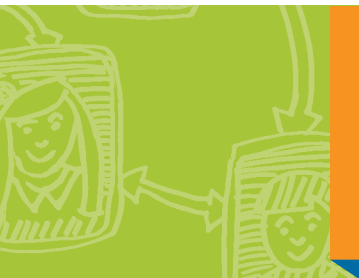
Student Chapters and Clubs are the hub of IEEE Computer Society activity on campus, and are found at colleges and universities around the world.

They’re the ideal places to not only network and find jobs, internships, and scholarships, but also to ask for advice on that coding project that has you stumped. Or the hardware issue you can’t quite get your head around. Or to make lasting friendships with like-minded individuals.

Best of all, IEEE Computer Society membership at the student level is very affordable. A full year membership* to IEEE and the IEEE Computer Society costs just \$40. And if you’re already an IEEE member, you can add IEEE Computer Society membership for only \$8 more.

Join today at www.computer.org/membership.

* Applications received between March 1 and August 15 are billed at the half-year rate of full-year membership (50% off). Full year membership rates apply for subsequent years. Go to www.computer.org/membership for additional information.



Can't find an IEEE Computer Society Student Chapter or Club on your campus? Start one today. Visit www.computer.org/student-chapters for more information.



“If you make just one connection a year in the IEEE Computer Society, you’ll be making an important investment in your future.”

Tom Conte, IEEE Computer Society President

IEEE  computer society

2001 L Street, NW
Suite 700
Washington, DC 20036-4928

www.computer.org

 **IEEE**